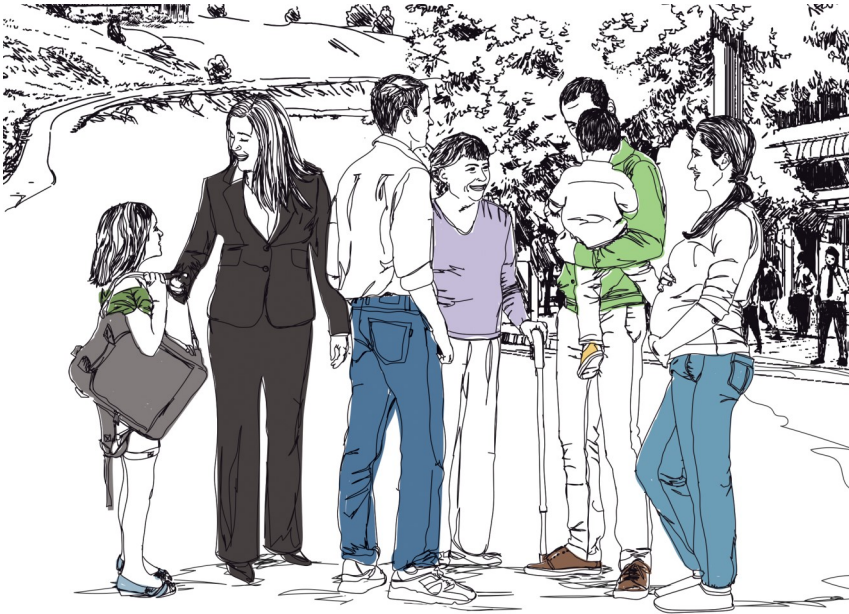


Services Offered

CLSC de Saint-Donat

Centre intégré de santé et de services sociaux de Lanaudière



819 424-1511

377, rue du Foyer
Saint-Donat (Québec)
J0T 2C0

Québec 

Services offered by the CLSC

IMPORTANT | Certains terms and conditions regarding the services offered at CLSCs may be subject to change. Before traveling, it is best to check with the CLSC.

Contact your CLSC at 819-424-1511.

When you call the CLSC, please:

- Have your health insurance card handy
- Explain your situation accurately



Health Services

- Do you have a **health problem**?
- Do you need **assistance** or **follow-up** after a **surgery**?
- Do you need **follow-up treatments** because of your health condition?

Services Offered : by appointments

- Sample collection/testing (blood tests, urine tests, etc.)
www.clicsante.ca or 1 833 991-2663
- Medical consultation (for minor emergencies 24-48 hours, appointment times available, by telephone upon opening)
Monday to Friday from 8:30 a.m. to 4:30 p.m.
Saturday, Sunday and holidays from 8:30 a.m. to 3:30 p.m.
- Nursing care (bandaging, injections, teaching, etc.)
- Emergency vaccination clinic
- Screening tests for STIs/Birth control - adult
- X-rays with queries



Home Support Services

- Is your **autonomy limited** or are you **unable to get around easily** because of your health condition?
- Do you need **temporary assistance** at home?

Contact the home support reception service at
450 757-2572 (450 757-CLSC) or 1 866 757-2572.

Services Offered:

- Home care assistance (personal hygiene, meals, etc.)
- Help and support for people with disabilities
- Fall prevention program
- In-home nursing care following surgery or a hospital stay, or in cases of chronic disease
- Self-treatment teaching and follow-up
- Respiratory therapy, occupational therapy, physical rehabilitation services, dietitian services, etc.
- In-home social services (coping with an illness, assessing residential services or protection plans, negligence or violence against an elderly person, etc.)
- Day Centre (nursing care, social or rehabilitation services, group activities and respite care)
- Home adaptation assessment
- Equipment loans (wheelchair, walker, hospital bed, etc.)
- Material assistance program for people with disabilities
- Direct allowance program for home care assistance and respite care
- Palliative care assistance and support



Children, Youth and Family Services

- Are you preparing for the **birth of a child**?
- Is your **child's development** worrying you?
- Does your child's **health** require monitoring?
- Are you questioning your **skills** or your **abilities as a parent**?

Services Offered:

- Vaccination
- Prenatal courses
- Postnatal visits
- Breastfeeding support
- Preventive dental hygiene
- Support to parents (early stimulation workshops, domestic help, etc.)
- Support to families with a disabled child and respite care
- OLO Program (egg-milk-orange)
- Integrated Perinatal and Early Childhood Services Program
(Programme SIPPE in French)
- Psychosocial services to youngsters in difficulty and their families/Youth mental health services

Other services offered by the CISSS



811 Info-Santé / Info-Social / GAP

Info-Santé : are you concerned with your physical health dial **811 ext.1**

Info-Social : if you, or a loved one, are experiencing various psychosocial difficulties dial **811 ext. 2**

GAP : for orphaned patients wishing to obtain an appointment with a healthcare professional **GAP.soinsvirtuels.gouv.qc.ca** or dial **811 ext. 3**



**This service is confidential and
accessible 24 hours a day 7 days a week.**

Services Offered:

- Sound advice and referral to key resources.



Health Services

Services Offered:

- Screening tests for STIs/Birth control (CLSC de Joliette) : 450 755-2111, ext. 422318
- Abortion clinic (CLSC de Joliette) : 450-755-2111, ext. 422418
- Asthma Instructional Centre (Centre hospitalier De Lanaudière) : 450 759-8222, ext. 2792
- Smoking Cessation Centre (CLSC de Joliette) : 450 755-2111, ext. 422313 or cea-cat.nord.cissslان@ssss.gouv.qc.ca



Mental Health and Psychosocial Services

- Are you or is a loved one:
 - ♦ Struggling to **overcome a trying ordeal** (major turning point in life, death of a loved one, separation, fire or natural disaster, etc.)?
 - ♦ Having **trouble at work**, with your personal **finances**, **housing**, etc.?
 - ♦ Having **mood changes** (depression, anxiety, anger, irritability, fear) that affect your ability to function?
- Does your child have **behaviour** or **adaptation problems**?

Dial 811, option 2 to contact Info-Social.

Services Offered - Adult:

- Initial meeting, assessment, orientation and referrals
- Psychosocial services by appointment for personal or family problems, relationship issues, crisis situation, etc.
- Alcochoix



Services in the Fields of Intellectual or Physical Disabilities and Autism Spectrum Disorders

- Are you, your child or a loved one having **problems** related to your **disability** or **difficulties**?
- Do you think your child may have a **developmental delay**?

Contact the centralized ID-PD-ASD reception service at
1 877 322-2898 or guichet.ditsadp.cissslan@ssss.gouv.qc.ca.



Addiction Rehabilitation Centre

Are you suffering from **substance abuse**, **alcoholism** or **compulsive gambling**?

Contact the centre nearest you:

- Joliette : 450 755-6655
- Charlemagne : 450 657-0071
- Terrebonne : 450 492-7444



Quebec Family Doctor Finder

You don't have a **family doctor**? Register now.

- Online: www.gamf.gouv.qc.ca
- By telephone: 1 833 755 4263 (GAMF)

Service Quality and Complaints Commissioner

450 759-5333, ext. 2133 or 1 800 229-1152, ext. 2133

Email: plaintes.cissslان@ssss.gouv.qc.ca

CISSS de Lanaudière Users Committee

450 759-5825 or 1 833 649-5733 (voicemail)

Email: cucilanaudiere@gmail.com

Transport/Support services offered by our partners

Adapted transportation service of the Matawinie RCM: 450 834-5441, ext. 7065 or 1 800 264-5441, ext. 7065
Matawinie Association for People with Disabilities: 450 834-5434 or 1 877 834-5434
Matawinie Volunteer Community Center: 450 882-1089 or 1 888 882-1086